

Welcome to the Workshop!

1. Welcome & introductions
2. Introducing the connect Athens process
3. Sharing initial highlights
4. Map & table discussions
5. Next steps & adjourn



Atlanta Highway → Lexington Road
connect athens
CORRIDOR PLANS



What is a Corridor Plan?

- An in-depth analysis of a single roadway and the many ways it can contribute to broader community goals
- Study transportation performance and impacts on community mobility, the surrounding land use, and the economic context

Atlanta Highway → Lexington Road
connect athens
CORRIDOR PLANS

Purpose and Plan Considerations

Mobility



Economics



Infrastructure




Quality of Place



Atlanta Highway → Lexington Road
connect athens
CORRIDOR PLANS

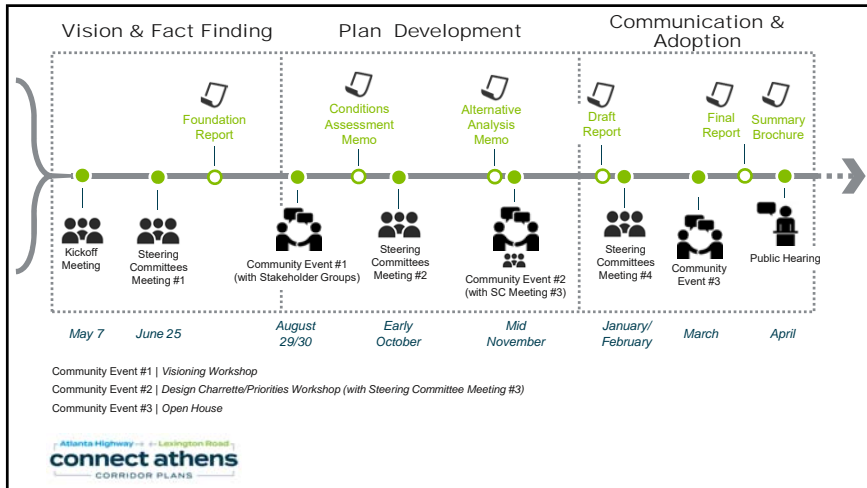
Process Outcomes

- Logical, viable strategy for development and reinvestment along the corridor
- Priority recommendations for mobility investments
- Actions for strengthening quality of place



Roles and Responsibilities

- Community
 - *Providing insight based on experience*
 - *Representing values*
- Steering Committees
 - *Providing direction*
 - *Developing key messages*
 - *Reaching the community directly*
 - *Evaluating findings and developing recommendations*
- Core Committee
 - *Aligning work to ensure efficiency*
 - *Looking over the "fence" or sharing*
- Staff
 - *Managing the overall process*
 - *Providing support and data*
 - *Considering logistics and overall organization*
- Planning Team
 - *Facilitating the process*
 - *Conducting research and analysis*
 - *Developing implementation plans*


Sharing Initial Highlights of the Foundation Analysis

Jonathan Guy
Kimley Horn



Corridor Extents – Lexington Road



Length: 3.8 miles
 133 Driveways/Intersections
 Intermittent Sidewalks
 Bus Routes #26 & 25 (weekday and limited weekend)
 No Dedicated Bike Facilities
 Gateway - East
 Diverse mix of uses (airport, neighborhood scale commercial, government, residential)

Corridor Extents – Atlanta Hwy



Length: 5 Miles
 174 Driveway/Intersections
 Intermittent Sidewalks
 Bus Routes #20, 21, 6 (weekday and limited weekend)
 No Dedicated Bike Facilities
 Gateway - West
 Commercial Corridor (former regional retail & Industrial).
 Adjacent residential (Single & Multi-family)

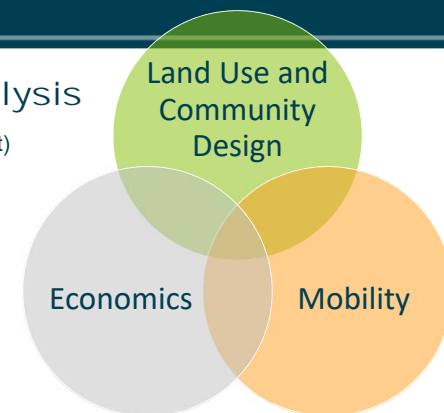
Lexington Road Corridor



Extents
 The Loop to Timber Creek Drive
 Study Area
 Planning Area – parcels fronting the corridor
 Impact Area – ¼-mile buffer with modifications (e.g., airport)

Approach to Analysis

Foundation Analysis (Snapshot)
 Targeted Analysis (Deep Dive)
(to be completed)

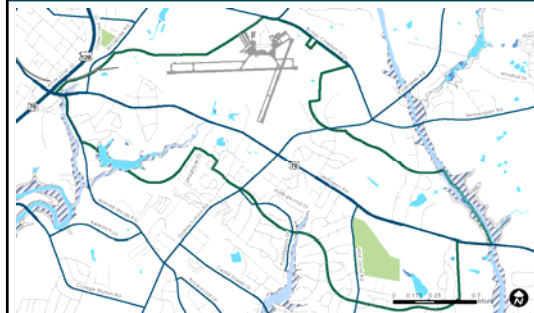
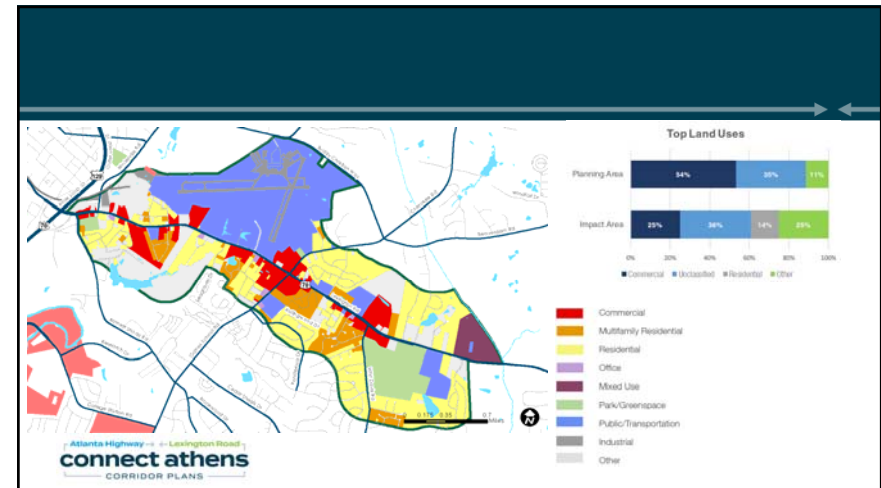


Land Use and Community Design

• Key Considerations

- Land use is defined by a “hodgepodge” of uses.
- The corridor connects people to a variety of goods, services, and institutional uses.
- Small, shallow lots front corridor and surrounded by established institutional uses and neighborhoods.

Atlanta Highway → Lexington Road
connect athens
 CORRIDOR PLANS



Land Use and Community Design

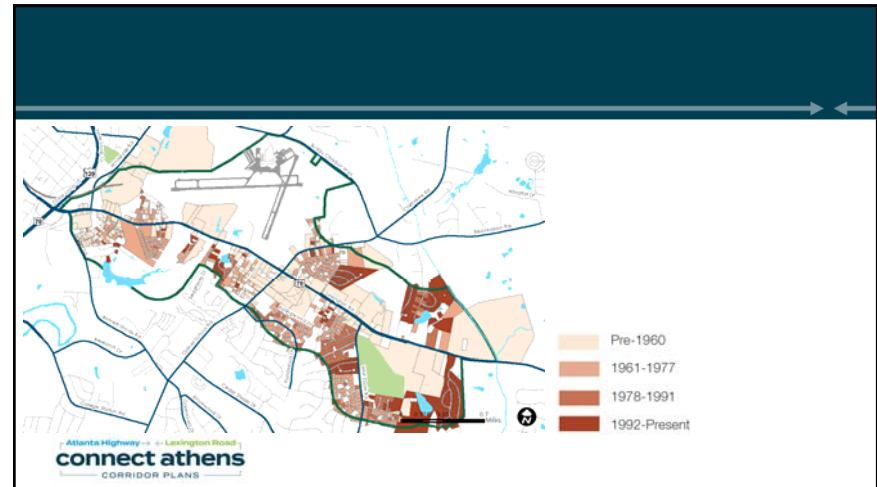
- Questions to Explore
 - What effect will constraints (physical and administrative) have on future opportunities?
 - What is the next model of corridor redevelopment?
 - How do we leverage corridor assets?

Atlanta Highway → Lexington Road
connect athens
 CORRIDOR PLANS

Economics

• Key Considerations

- Athens is a destination city.
- Retail variety and growth is limited by the number of existing rooftops.
- The corridor is home to a modest number of the county's total jobs but carries 15,000+ commuters each day.



Economics

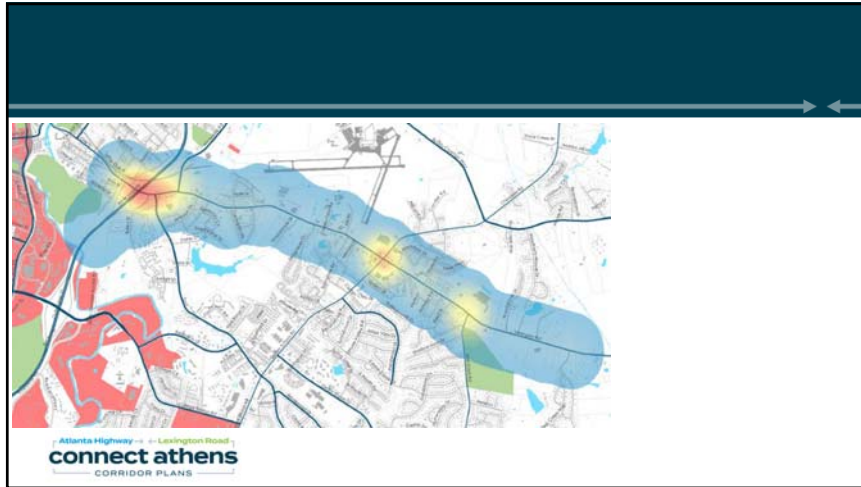
• Questions to Explore

- What are the contributing factors to slower commercial growth (and “limited” market potential) along the corridor?
- How can we make the corridor a destination or create pulses of activity along its extents?
- What are Lexington Road’s economic development priorities? How do these priorities compare to other corridors?

Mobility

• Key Considerations

- The corridor serves multiple purposes—gateway, regional thruway, and local connection.
- Active transportation is a challenge but could be improved.
- Traffic flow and safety are frequently cited as contributing factors to other issues.



Mobility

- Questions to Explore
 - Where along the corridor is more detailed traffic analysis warranted?
 - How can the bicycle and pedestrian network be enhanced to support mobility, aesthetic, and economic goals?
 - How can (or should) this corridor's gateway strategy be coordinated with other gateways?

Atlanta Highway → Lexington Road
connect athens
CORRIDOR PLANS



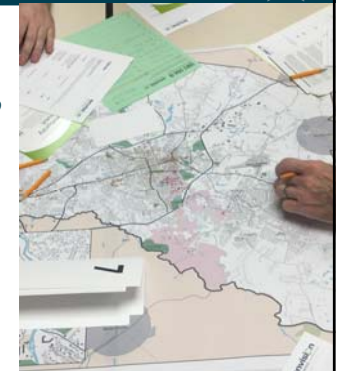
Map & Table discussions

Kyle May
planning NEXT

Atlanta Highway → Lexington Road
connect athens
CORRIDOR PLANS

Map & Table Discussions

- Two parallel engagement activities this evening
 - *Strong, weak and opportunities places map based activity*
 - *Table topic discussions*



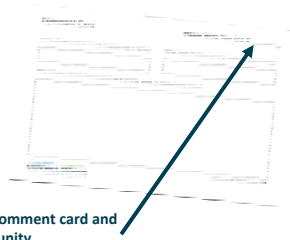
Atlanta Highway → Lexington Road
connect athens
CORRIDOR PLANS

Map Activity

- Stick dots on the large map at a place that you consider to be:

- **Strong** – This place, area, use is an asset to the corridor
- **Weak** – This place, area, use represents a challenge to be addressed in the plans
- **Opportunity** – This place, area, use has the potential to be better leveraged

Once you place your dot, use the number in the center to label a comment card and tell the Planning Team why this place is strong, weak or an opportunity



Atlanta Highway → ← Lexington Road
connect athens
 CORRIDOR PLANS

Table Discussions

- Simultaneous topical discussions
 - *Table recorders will capture conversation*
 - *Feel free to drop in (ease in...) and out of the four topics and move around the room*
 - *As you join, consider the prompt (large print above the table) and join in with your reactions*



Atlanta Highway → ← Lexington Road
connect athens
 CORRIDOR PLANS

Table Discussions

1. What should we do to improve the **function** and or **safety** of this corridor? Why?
2. What would make this corridor feel more **attractive** in **appearance**? For investment? Why?
3. How do we improve the **economic viability** for existing and future businesses along this corridor? Why?
4. What would make this corridor feel more like a **cohesive "place"**? Why?

Atlanta Highway → ← Lexington Road
connect athens
 CORRIDOR PLANS



Next Steps

Kyle May
 planning NEXT

Atlanta Highway → ← Lexington Road
connect athens
 CORRIDOR PLANS

